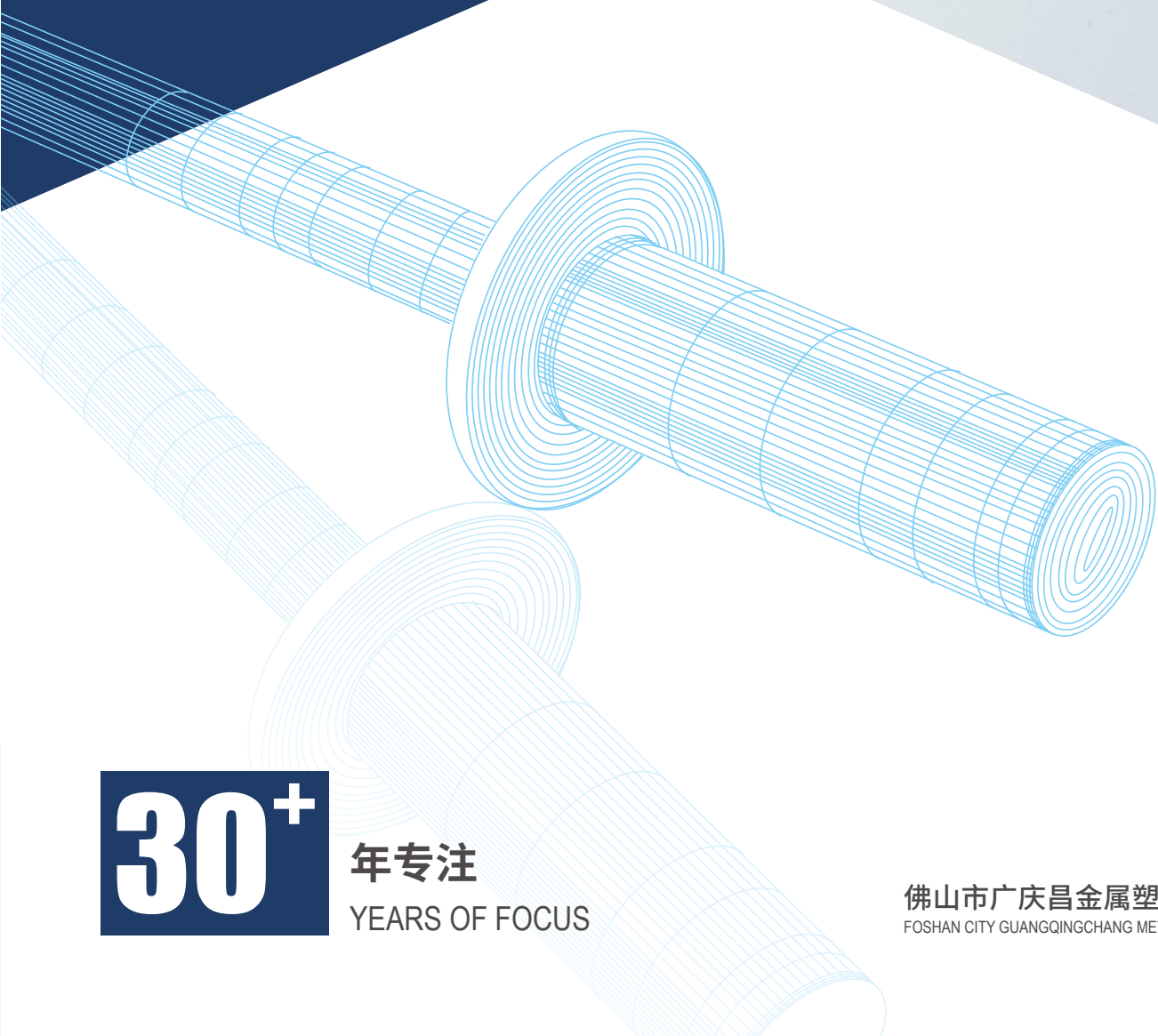


 **Powerchang**®
Blind Rivets
庆昌铆钉



30⁺

年专注
YEARS OF FOCUS

佛山市广庆昌金属塑料有限公司
FOSHAN CITY GUANGQINGCHANG METAL PLASTIC CO.,LTD.

ABOUT

关于我们



30⁺ 年
Production experience
生产经验

10000⁺ m²
Factory area
生产厂房

100⁺ 位
Employees
专业员工

Foshan City Guangqingchang Metal Plastic Co.,Ltd. was founded in 1991. It is a manufacturer of fasteners with a staff of over 100 employees, and the covered factory area has exceeded 10,000 m².

Guangqingchang company manufactures many kinds of blind rivets, screws and lathe pieces, the products are mainly supporting the automobile, machinery, furniture, home appliances, electronic instruments and other production fields.

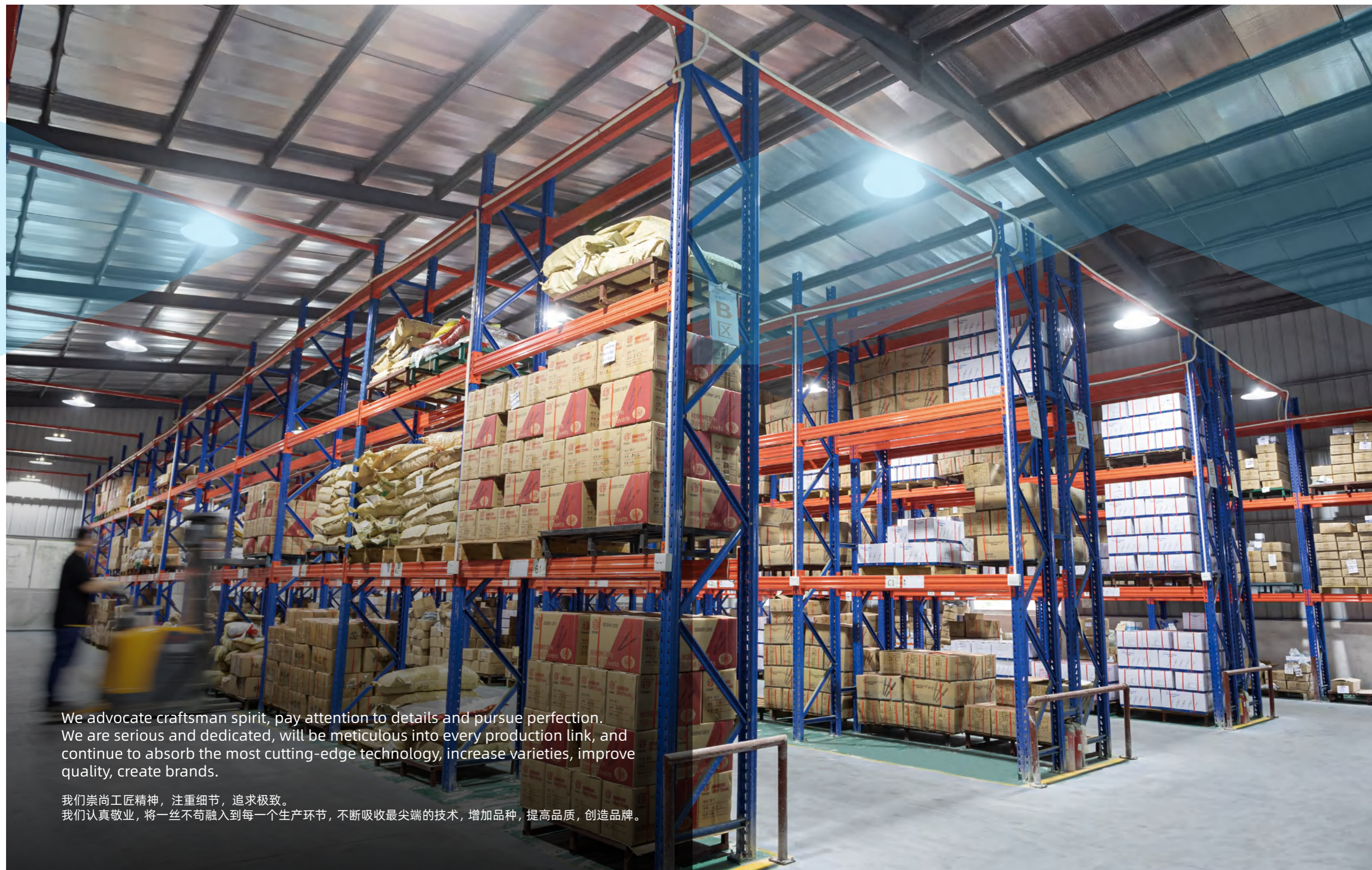
Guangqingchang company pays attention to every link, from the procurement of materials, production, quality inspection, inventory management, logistics, after-sales, to provide customers with high-quality products. It implements the quality management system, and has passed the ISO 9001 and IATF 16949 system certification.

佛山市广庆昌金属塑料有限公司成立于1991年，是一家紧固件制造商，拥有超过100名员工，工厂总面积超过10,000平方米。

广庆昌公司主要生产各种抽芯铆钉、螺丝和车床件，产品主要配套于汽车、机械、家具、家电、电子仪器等生产领域。

广庆昌公司注重每一个环节，从采购物料、生产、质量检测、库存管理、物流、售后，为客户提供高品质产品。公司执行质量管理体系，并通过ISO 9001和IATF 16949体系认证。





We advocate craftsman spirit, pay attention to details and pursue perfection. We are serious and dedicated, will be meticulous into every production link, and continue to absorb the most cutting-edge technology, increase varieties, improve quality, create brands.

我们崇尚工匠精神，注重细节，追求极致。我们认真敬业，将一丝不苟融入到每一个生产环节，不断吸收最尖端的技术，增加品种，提高品质，创造品牌。



INSPECTION IN THE PRODUCTION PROCESS
生产过程中严密检测



STEEL, STAINLESS STEEL RIVETS PRODUCTION WORKSHOP
铁铆钉、不锈钢铆钉生产车间



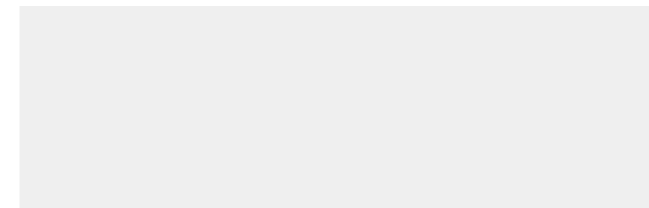
ALUMINUM RIVETS PRODUCTION WORKSHOP
铝制铆钉生产车间



HIGH STRENGTH RIVET PRODUCTION PROCESS
高强度铆钉生产过程



HIGH STRENGTH RIVET PRODUCTION PROCESS
高强度铆钉生产过程

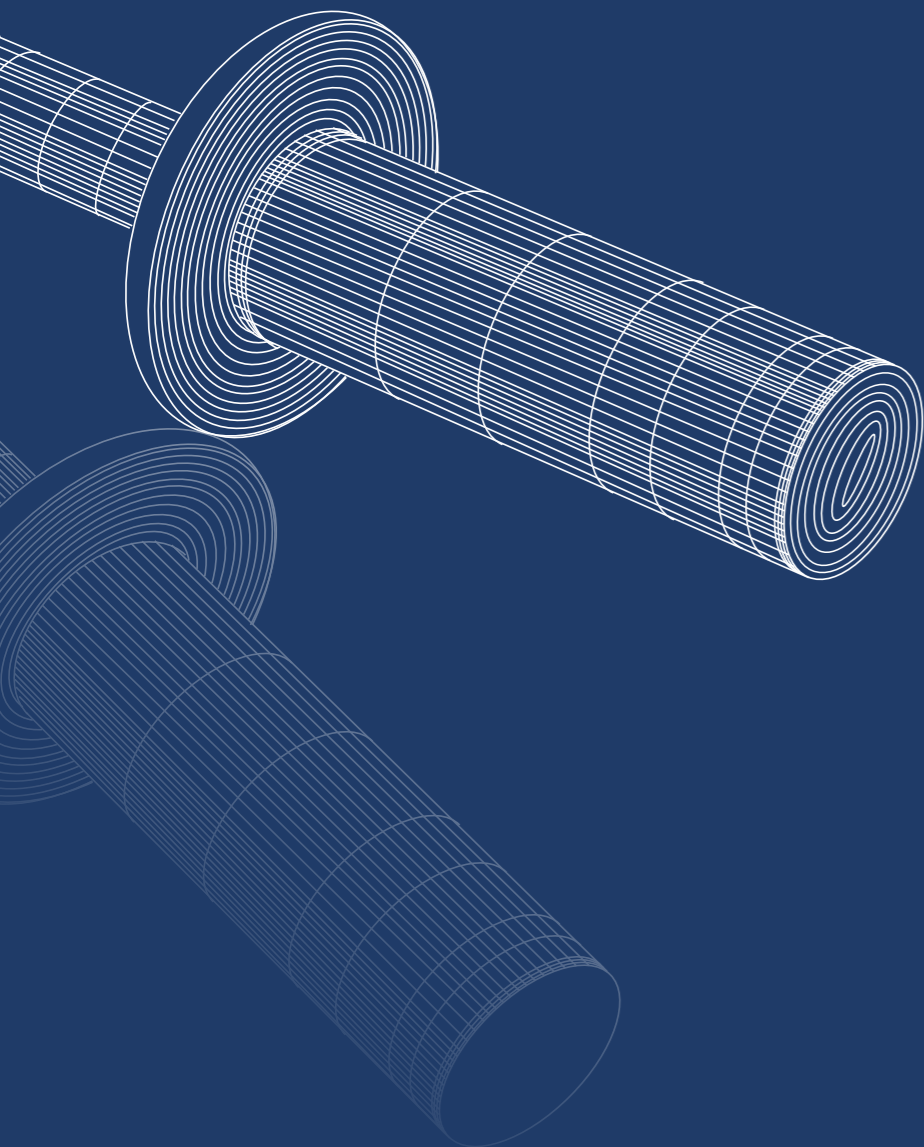


ASSEMBLY WORKSHOP
组装车间



We have advanced production equipment, top processing technology, always keep in mind the spirit of "quality, responsibility, focus, innovation", continue to work hard, the pursuit of excellent quality, to create a world famous brand. The company has to go through the internal trial production stage for each mold, and make a series of strict tests on the appearance test, hardness test, salt spray test, drop test, matching test and so on for the samples produced in accordance with the national industry standards before leaving the factory.

我们拥有先进的生产设备，顶尖的加工技术，时刻牢记以“品质、责任、专注、创新”的精神持续艰苦奋斗，追求卓越质量，创造世界名牌。公司对每一副模具都必须经过内部试产阶段，对试产出来的样品按照国家行业标准作外观检测、硬度检测、盐雾检测、跌落检测、配合检测等一系列的严格测试方可出厂。



CONTENT 目录

STANDARD RIVETS

ALUMINUM-STEEL ZINC PLATED
ALUMINUM-ALUMINUM
STEEL ZINC PLATED-STEEL ZINC PLATED
STAINLESS STEEL A2-STAINLESS STEEL A2

标准型抽芯铆钉

铝制 - 镀锌钢 09/11
铝制 - 铝制 12/13
镀锌钢 - 镀锌钢 14/15
不锈钢 A2- 不锈钢 A2 16/18

SEALED RIVETS

ALUMINUM-STEEL PHOSPHATED
STEEL ZINC PLATED-STEEL ZINC PLATED
STAINLESS STEEL A2-STAINLESS STEEL A2

封闭型抽芯铆钉

铝制 - 碳钢 (磷化处理) 19/20
镀锌钢 - 镀锌钢 21
不锈钢 A2- 不锈钢 A2 22

PEEL RIVETS

ALUMINUM-STEEL ZINC PLATED

拉花抽芯铆钉

铝制 - 镀锌钢 23/24

TRI-FIRM RIVETS

ALUMINUM-ALUMINUM

灯笼抽芯铆钉

铝制 - 铝制 25/26

UNI-GRIP RIVETS

STEEL ZINC PLATED-STEEL ZINC PLATED
STAINLESS STEEL A2-STAINLESS STEEL A2

单鼓抽芯铆钉

镀锌钢 - 镀锌钢 27/28
不锈钢 A2- 不锈钢 A2 29/30

MULTI-GRIP RIVETS

ALUMINUM-STEEL ZINC PLATED
STEEL ZINC PLATED-STEEL ZINC PLATED
STAINLESS STEEL A2-STAINLESS STEEL A2

多鼓抽芯铆钉

铝制 - 镀锌钢 31/32
镀锌钢 - 镀锌钢 33
不锈钢 A2- 不锈钢 A2 34

HEMLOK RIVETS

STEEL ZINC PLATED-STEEL ZINC PLATED
STAINLESS STEEL A2-STAINLESS STEEL A2

海马抽芯铆钉

镀锌钢 - 镀锌钢 35/36
不锈钢 A2- 不锈钢 A2 36

MONOBOLT RIVETS

STEEL ZINC PLATED-STEEL ZINC PLATED
STAINLESS STEEL A2-STAINLESS STEEL A2

外锁抽芯铆钉

镀锌钢 - 镀锌钢 37/38
不锈钢 A2- 不锈钢 A2 38

INTERLOCK RIVETS

STEEL ZINC PLATED-STEEL ZINC PLATED
STAINLESS STEEL A2-STAINLESS STEEL A2

内锁抽芯铆钉

镀锌钢 - 镀锌钢 39/40
不锈钢 A2- 不锈钢 A2 40

企业愿景 CORPORATE VISION

追求卓越、为客户创造更多价值与服务
Pursue excellence, create more value and service for customers

工作作风 STYLE OF WORKING

严谨细致、忘我敬业、朝气蓬勃、勇于创新
Rigorous and meticulous, selfless and dedicated, vigorous and innovative

战略目标 STRATEGIC OBJECTIVES

成为客户信赖的战略合作伙伴
Become a trusted strategic partner of customers

质量方针 QUALITY POLICY

技术、科学的管理，在持续改进的基础上提供满足顾客需求的产品
Technical and scientific management, providing products that meet customer needs on the basis of continuous improvement

STANDARD RIVETS

标准型抽芯铆钉



ALUMINUM-STEEL ZINC PLATED
铝制 - 镀锌钢



ALUMINUM-ALUMINUM
铝制 - 铝制



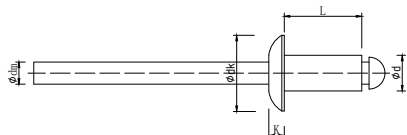
STEEL ZINC PLATED-STEEL ZINC PLATED
镀锌钢 - 镀锌钢



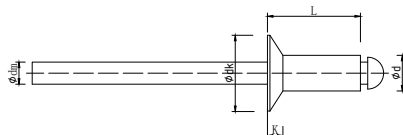
STAINLESS STEEL A2-STAINLESS STEEL A2
不锈钢 A2 - 不锈钢 A2

STANDARD RIVETS 标准型抽芯铆钉

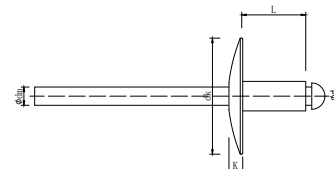
ALUMINUM-STEEL ZINC PLATED 铝制 - 镀锌钢



Dome 圆头



CSK 120° 沉头

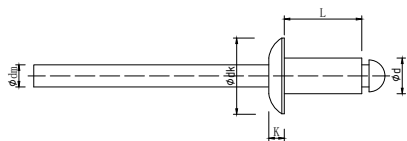


Large Flange 大法兰头

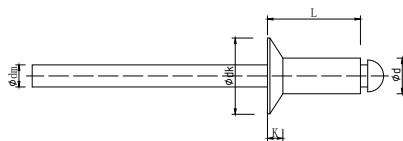
Rivet Ø 0.08/-0.15	dxL mm	Grip Range mm	dm max.	Dome		CSK 120°		Large Flange		Shear Strength N	Tensile Strength N
				dk max.	K max.	dk max.	K max.	dk max.	K max.		
2.4 Hole Size Ø 2.5-2.6mm	2.4 x 4	0.5 - 2.0	1.6	5.0	1.0	4.8	1.0			180	280
	2.4 x 6	2.0 - 4.0									
	2.4 x 8	4.0 - 6.0									
	2.4 x 10	6.0 - 8.0									
	2.4 x 12	7.0 - 9.5									
	2.4 x 14	8.0 - 11.5									
3.0 Hole Size Ø 3.1-3.2 mm	3.0 x 6	1.0 - 3.5	2.0	6.3	1.3	6.3	1.3			300	400
	3.0 x 8	3.5 - 5.0									
	3.0 x 10	5.0 - 7.0									
	3.0 x 12	7.0 - 9.0									
	3.0 x 14	9.0 - 11.0									
	3.0 x 16	9.0 - 12.5									
	3.0 x 18	12.0 - 14.5									
3.0 x 20	13.0 - 16.5										
3.2 Hole Size Ø 3.3-3.4 mm	3.2 x 6	1.0 - 3.5	2.0	6.7	1.3	6.3	1.3	9.8	2.0	400	500
	3.2 x 8	3.5 - 5.0									
	3.2 x 10	5.0 - 7.0									
	3.2 x 12	7.0 - 9.0									
	3.2 x 14	9.0 - 11.0									
	3.2 x 16	9.0 - 12.5									
	3.2 x 18	12.0 - 14.5									
	3.2 x 20	13.0 - 16.5									
3.2 x 25	15.0 - 21.0										
4.0 Hole Size Ø 4.1-4.2 mm	4.0 x 6	1.0 - 3.0	2.5	8.4	1.7	7.5	1.7	12.5	2.2	800	1000
	4.0 x 8	3.0 - 5.0									
	4.0 x 10	4.0 - 6.5									
	4.0 x 12	6.0 - 8.5									
	4.0 x 14	7.0 - 10.5									
	4.0 x 16	8.0 - 12.5									
	4.0 x 18	10.0 - 14.5									
	4.0 x 20	12.0 - 16.0									
	4.0 x 25	16.0 - 21.0									
	4.0 x 30	21.0 - 26.0									
	4.0 x 35	26.0 - 30.5									
4.0 x 40	30.5 - 35.0										

STANDARD RIVETS 标准型抽芯铆钉

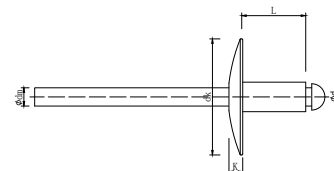
ALUMINUM-STEEL ZINC PLATED 铝制 - 镀锌钢



Dome 圆头



CSK 120° 沉头

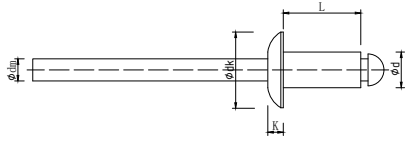


Large Flange 大法兰头

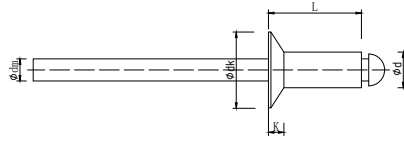
Rivet Ø 0.08/-0.15	dxL mm	Grip Range mm	dm max.	Dome		CSK 120°		Large Flange		Shear Strength N	Tensile Strength N
				dk max.	K max.	dk max.	K max.	dk max.	K max.		
4.8 Hole Size Ø 4.9-5.0 mm	4.8 x 6	1.0 - 2.5	3.0	10.1	2.0	9.5	2.0	16.5	2.5	1300	1500
	4.8 x 8	2.5 - 4.0									
	4.8 x 10	4.0 - 6.0									
	4.8 x 12	6.0 - 8.0									
	4.8 x 14	8.0 - 10.0									
	4.8 x 16	9.0 - 12.0									
	4.8 x 18	10.0 - 14.0									
	4.8 x 20	12.0 - 16.0									
	4.8 x 25	16.0 - 21.0									
	4.8 x 30	21.0 - 25.0									
4.8 x 35	25.0 - 30.0										
4.8 x 40	30.0 - 35.0										
5.0 Hole Size Ø 5.1-5.2 mm	5.0 x 6	1.0 - 2.5	3.0	10.5	2.1	9.5	2.1	16.5	2.5	1500	1700
	5.0 x 8	2.5 - 4.0									
	5.0 x 10	4.0 - 6.0									
	5.0 x 12	6.0 - 8.0									
	5.0 x 14	8.0 - 10.0									
	5.0 x 16	9.0 - 12.0									
	5.0 x 18	10.0 - 14.0									
	5.0 x 20	12.0 - 16.0									
	5.0 x 25	16.0 - 21.0									
	5.0 x 30	21.0 - 25.0									
5.0 x 35	25.0 - 30.0										
5.0 x 40	30.0 - 35.0										
6.0 Hole Size Ø 6.1-6.2 mm	6.0 x 8	1.5 - 3.0	3.9	12.6	2.5	11.3	2.1			2000	2500
	6.0 x 10	3.0 - 5.0									
	6.0 x 12	5.0 - 7.0									
	6.0 x 14	7.0 - 9.0									
	6.0 x 16	7.0 - 11.0									
	6.0 x 18	11.0 - 13.0									
	6.0 x 20	11.0 - 15.0									
	6.0 x 25	14.0 - 19.5									
	6.0 x 30	19.5 - 24.5									
	6.0 x 35	24.0 - 29.0									
6.0 x 40	29.0 - 34.0										
6.4 Hole Size Ø 6.5-6.6 mm	6.4 x 8	1.5 - 3.0	3.9	13.4	2.7	12.5	2.7	19	3.2	2200	3000
	6.4 x 10	2.0 - 4.0									
	6.4 x 12	3.0 - 6.0									
	6.4 x 14	6.0 - 8.0									
	6.4 x 16	6.0 - 10.0									
	6.4 x 18	8.0 - 12.0									
	6.4 x 20	10.0 - 14.0									
	6.4 x 25	14.0 - 18.0									
	6.4 x 30	18.0 - 23.0									
6.4 x 35	23.0 - 28.0										
6.4 x 40	28.0 - 33.0										

STANDARD RIVETS 标准型抽芯铆钉

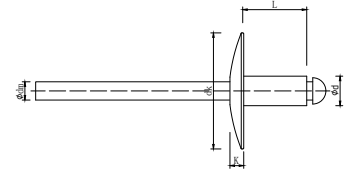
ALUMINUM-ALUMINUM 铝制 - 铝制



Dome 圆头



CSK 120° 沉头

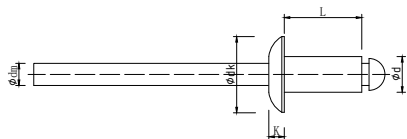


Large Flange 大法兰头

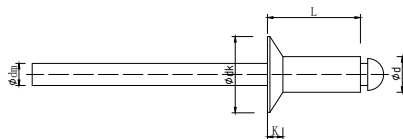
Rivet Ø 0.08/-0.15	dxL mm	Grip Range mm	dm max.	Dome		CSK 120°		Large Flange		Shear Strength N	Tensile Strength N
				dk max.	K max.	dk max.	K max.	dk max.	K max.		
2.4 Hole Size Ø 2.5-2.6 mm	2.4 x 4	0.5 - 2.0	1.6	5.0	1.0	4.8	1.0			150	200
	2.4 x 6	2.0 - 4.0									
	2.4 x 8	4.0 - 6.0									
	2.4 x 10	6.0 - 8.0									
	2.4 x 12	7.0 - 9.5									
	2.4 x 14	8.0 - 11.5									
	2.4 x 16	10.0 - 13.0									
3.0 Hole Size Ø 3.1-3.2 mm	3.0 x 6	1.0 - 3.5	2.0	6.3	1.3	6.3	1.3			250	300
	3.0 x 8	3.5 - 5.0									
	3.0 x 10	5.0 - 7.0									
	3.0 x 12	7.0 - 9.0									
	3.0 x 14	9.0 - 11.0									
	3.0 x 16	9.0 - 12.5									
	3.0 x 18	12.0 - 14.5									
3.0 x 20	13.0 - 16.5										
3.2 Hole Size Ø 3.3-3.4 mm	3.2 x 6	1.0 - 3.5	2.0	6.7	1.3	6.3	1.3	9.8	2.0	350	400
	3.2 x 8	3.5 - 5.0									
	3.2 x 10	5.0 - 7.0									
	3.2 x 12	7.0 - 9.0									
	3.2 x 14	9.0 - 11.0									
	3.2 x 16	9.0 - 12.5									
	3.2 x 18	12.0 - 14.5									
	3.2 x 20	13.0 - 16.5									
3.2 x 25	15.0 - 21.0										
4.0 Hole Size Ø 4.1-4.2 mm	4.0 x 6	1.0 - 3.0	2.5	8.4	1.7	7.5	1.7	12.5	2.2	700	900
	4.0 x 8	3.0 - 5.0									
	4.0 x 10	4.0 - 6.5									
	4.0 x 12	6.0 - 8.5									
	4.0 x 14	7.0 - 10.5									
	4.0 x 16	8.0 - 12.5									
	4.0 x 18	10.0 - 14.5									
	4.0 x 20	12.0 - 16.0									
	4.0 x 25	16.0 - 21.0									
	4.0 x 30	21.0 - 26.0									
	4.0 x 35	26.0 - 30.5									
	4.0 x 40	30.5 - 35.0									

STANDARD RIVETS 标准型抽芯铆钉

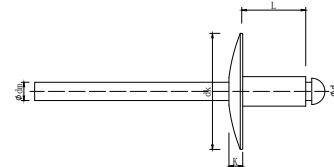
ALUMINUM-ALUMINUM 铝制 - 铝制



Dome 圆头



CSK 120° 沉头

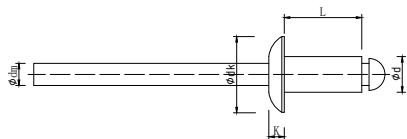


Large Flange 大法兰头

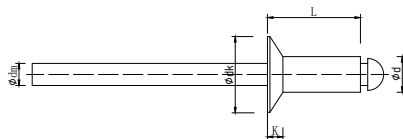
Rivet Ø 0.08/-0.15	dxL mm	Grip Range mm	dm max.	Dome		CSK 120°		Large Flange		Shear Strength N	Tensile Strength N
				dk max.	K max.	dk max.	K max.	dk max.	K max.		
4.8 Hole Size Ø 4.9-5.0 mm	4.8 x 6	1.0 - 2.5	2.9	10.1	2.0	9.5	2.0	16.5	2.5	850	1300
	4.8 x 8	2.5 - 4.0									
	4.8 x 10	4.0 - 6.0									
	4.8 x 12	6.0 - 8.0									
	4.8 x 14	8.0 - 10.0									
	4.8 x 16	9.0 - 12.0									
	4.8 x 18	10.0 - 14.0									
	4.8 x 20	12.0 - 16.0									
	4.8 x 25	16.0 - 21.0									
	4.8 x 30	21.0 - 25.0									
4.8 x 35	25.0 - 30.0										
4.8 x 40	30.0 - 35.0										
5.0 Hole Size Ø 5.1-5.2 mm	5.0 x 6	1.0 - 2.5	3.0	10.5	2.1	9.5	2.1	16.5	2.5	1000	1500
	5.0 x 8	2.5 - 4.0									
	5.0 x 10	4.0 - 6.0									
	5.0 x 12	6.0 - 8.0									
	5.0 x 14	8.0 - 10.0									
	5.0 x 16	9.0 - 12.0									
	5.0 x 18	10.0 - 14.0									
	5.0 x 20	12.0 - 16.0									
	5.0 x 25	16.0 - 21.0									
	5.0 x 30	21.0 - 25.0									
5.0 x 35	25.0 - 30.0										
5.0 x 40	30.0 - 35.0										
6.0 Hole Size Ø 6.1-6.2 mm	6.0 x 8	1.5 - 3.0	3.7	12.6	2.5	11.3	2.1			1200	1900
	6.0 x 10	3.0 - 5.0									
	6.0 x 12	5.0 - 7.0									
	6.0 x 14	7.0 - 9.0									
	6.0 x 16	7.0 - 11.0									
	6.0 x 18	11.0 - 13.0									
	6.0 x 20	11.0 - 15.0									
	6.0 x 25	14.0 - 19.5									
	6.0 x 30	19.5 - 24.5									
	6.0 x 35	24.0 - 29.0									
6.0 x 40	29.0 - 34.0										
6.4 Hole Size Ø 6.5-6.6 mm	6.4 x 8	1.5 - 3.0	3.8	13.4	2.7	12.5	2.7	19	3.2	1500	2200
	6.4 x 10	2.0 - 4.0									
	6.4 x 12	3.0 - 6.0									
	6.4 x 14	6.0 - 8.0									
	6.4 x 16	6.0 - 10.0									
	6.4 x 18	8.0 - 12.0									
	6.4 x 20	10.0 - 14.0									
	6.4 x 25	14.0 - 18.0									
	6.4 x 30	18.0 - 23.0									
	6.4 x 35	23.0 - 28.0									
6.4 x 40	28.0 - 33.0										

STANDARD RIVETS 标准型抽芯铆钉

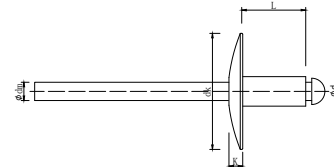
STEEL ZINC PLATED-STEEL ZINC PLATED 镀锌钢 - 镀锌钢



Dome 圆头



CSK 120° 沉头

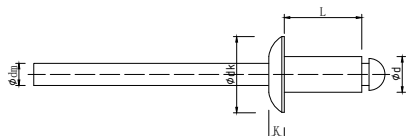


Large Flange 大法兰头

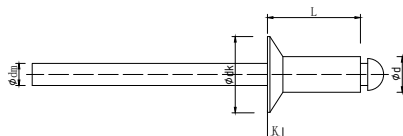
Rivet Ø 0.08/-0.15	dxL mm	Grip Range mm	dm max.	Dome		CSK 120°		Large Flange		Shear Strength N	Tensile Strength N
				dk max.	K max.	dk max.	K max.	dk max.	K max.		
2.4 Hole Size Ø 2.5-2.6 mm	2.4 x 4	0.5 - 2.0	1.5	5.0	1.0	4.8	1.0			500	700
	2.4 x 6	2.0 - 4.0									
	2.4 x 8	4.0 - 6.0									
	2.4 x 10	6.0 - 8.0									
	2.4 x 12	7.0 - 9.5									
	2.4 x 14	8.0 - 11.5									
3.0 Hole Size Ø 3.1-3.2 mm	3.0 x 6	1.0 - 3.5	2.15	6.3	1.3	6.3	1.3			1000	1100
	3.0 x 8	3.5 - 5.0									
	3.0 x 10	5.0 - 7.0									
	3.0 x 12	7.0 - 9.0									
	3.0 x 14	9.0 - 11.0									
	3.0 x 16	9.0 - 12.5									
	3.0 x 18	12.0 - 14.5									
3.0 x 20	13.0 - 16.5										
3.2 Hole Size Ø 3.3-3.4 mm	3.2 x 6	1.0 - 3.5	2.15	6.7	1.3	6.3	1.3	9.8	2.0	1100	1200
	3.2 x 8	3.5 - 5.0									
	3.2 x 10	5.0 - 7.0									
	3.2 x 12	7.0 - 9.0									
	3.2 x 14	9.0 - 11.0									
	3.2 x 16	9.0 - 12.5									
	3.2 x 18	12.0 - 14.5									
	3.2 x 20	13.0 - 16.5									
3.2 x 25	15.0 - 21.0										
4.0 Hole Size Ø 4.1-4.2 mm	4.0 x 6	1.0 - 3.0	2.8	8.4	1.7	7.5	1.7	12.5	2.2	1700	2000
	4.0 x 8	3.0 - 5.0									
	4.0 x 10	4.0 - 6.5									
	4.0 x 12	6.0 - 8.5									
	4.0 x 14	7.0 - 10.5									
	4.0 x 16	8.0 - 12.5									
	4.0 x 18	10.0 - 14.5									
	4.0 x 20	12.0 - 16.0									
	4.0 x 25	16.0 - 21.0									
	4.0 x 30	21.0 - 26.0									
	4.0 x 35	26.0 - 30.5									
4.0 x 40	30.5 - 35.0										

STANDARD RIVETS 标准型抽芯铆钉

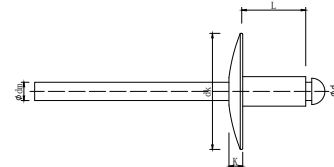
STEEL ZINC PLATED-STEEL ZINC PLATED 镀锌钢 - 镀锌钢



Dome 圆头



CSK 120° 沉头

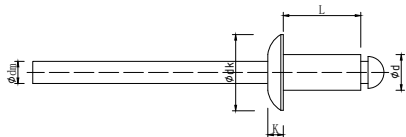


Large Flange 大法兰头

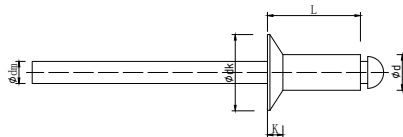
Rivet Ø 0.08/-0.15	dxL mm	Grip Range mm	dm max.	Dome		CSK 120°		Large Flange		Shear Strength N	Tensile Strength N
				dk max.	K max.	dk max.	K max.	dk max.	K max.		
4.8 Hole Size Ø 4.9-5.0 mm	4.8 x 6	1.0 - 2.5	3.5	10.1	2.0	9.5	2.0	16.5	2.5	2900	3100
	4.8 x 8	2.5 - 4.0									
	4.8 x 10	4.0 - 6.0									
	4.8 x 12	6.0 - 8.0									
	4.8 x 14	8.0 - 10.0									
	4.8 x 16	9.0 - 12.0									
	4.8 x 18	10.0 - 14.0									
	4.8 x 20	12.0 - 16.0									
	4.8 x 25	16.0 - 21.0									
	4.8 x 30	21.0 - 25.0									
4.8 x 35	25.0 - 30.0										
4.8 x 40	30.0 - 35.0										
5.0 Hole Size Ø 5.1-5.2 mm	5.0 x 6	1.0 - 2.5	3.5	10.5	2.1	9.5	2.1	16.5	2.5	3100	4000
	5.0 x 8	2.5 - 4.0									
	5.0 x 10	4.0 - 6.0									
	5.0 x 12	6.0 - 8.0									
	5.0 x 14	8.0 - 10.0									
	5.0 x 16	9.0 - 12.0									
	5.0 x 18	10.0 - 14.0									
	5.0 x 20	12.0 - 16.0									
	5.0 x 25	16.0 - 21.0									
	5.0 x 30	21.0 - 25.0									
5.0 x 35	25.0 - 30.0										
5.0 x 40	30.0 - 35.0										
6.0 Hole Size Ø 6.1-6.2 mm	6.0 x 8	1.5 - 3.0	3.4	12.6	2.5	11.3	2.1			4300	4800
	6.0 x 10	3.0 - 5.0									
	6.0 x 12	5.0 - 7.0									
	6.0 x 14	7.0 - 9.0									
	6.0 x 16	7.0 - 11.0									
	6.0 x 18	11.0 - 13.0									
	6.0 x 20	11.0 - 15.0									
	6.0 x 25	14.0 - 19.5									
	6.0 x 30	19.5 - 24.5									
	6.0 x 35	24.0 - 29.0									
6.0 x 40	29.0 - 34.0										
6.4 Hole Size Ø 6.5-6.6 mm	6.4 x 8	1.5 - 3.0	4	13.4	2.7	12.5	2.7	19	3.2	4900	5700
	6.4 x 10	2.0 - 4.0									
	6.4 x 12	3.0 - 6.0									
	6.4 x 14	6.0 - 8.0									
	6.4 x 16	6.0 - 10.0									
	6.4 x 18	8.0 - 12.0									
	6.4 x 20	10.0 - 14.0									
	6.4 x 25	14.0 - 18.0									
	6.4 x 30	18.0 - 23.0									
	6.4 x 35	23.0 - 28.0									
6.4 x 40	28.0 - 33.0										

STANDARD RIVETS 标准型抽芯铆钉

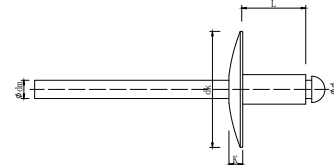
STAINLESS STEEL A2-STAINLESS STEEL A2 不锈钢 A2- 不锈钢 A2



Dome 圆头



CSK 120° 沉头

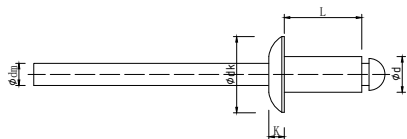


Large Flange 大法兰头

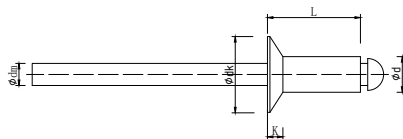
Rivet Ø 0.08/-0.15	dxL mm	Grip Range mm	dm max.	Dome		CSK 120°		Large Flange		Shear Strength N	Tensile Strength N
				dk max.	K max.	dk max.	K max.	dk max.	K max.		
3.0 Hole Size Ø 3.1-3.2 mm	3.0 x 6	1.0 - 3.5	2.05	6.3	1.3	6.3	1.3			1800	2200
	3.0 x 8	3.5 - 5.0									
	3.0 x 10	5.0 - 7.0									
	3.0 x 12	7.0 - 9.0									
	3.0 x 14	9.0 - 11.0									
	3.0 x 16	9.0 - 12.5									
	3.0 x 18	12.0 - 14.5									
	3.0 x 20	13.0 - 16.5									
3.2 Hole Size Ø 3.3-3.4 mm	3.2 x 6	1.0 - 3.5	2.15	6.7	1.3	6.3	1.3	9.8	2.0	1900	2500
	3.2 x 8	3.5 - 5.0									
	3.2 x 10	5.0 - 7.0									
	3.2 x 12	7.0 - 9.0									
	3.2 x 14	9.0 - 11.0									
	3.2 x 16	9.0 - 12.5									
	3.2 x 18	12.0 - 14.5									
	3.2 x 20	13.0 - 16.5									
	3.2 x 25	15.0 - 21.0									
4.0 Hole Size Ø 4.1-4.2 mm	4.0 x 6	1.0 - 3.0	2.75	8.4	1.7	7.5	1.7	12.5	2.2	2700	3500
	4.0 x 8	3.0 - 5.0									
	4.0 x 10	4.0 - 6.5									
	4.0 x 12	6.0 - 8.5									
	4.0 x 14	7.0 - 10.5									
	4.0 x 16	8.0 - 12.5									
	4.0 x 18	10.0 - 14.5									
	4.0 x 20	12.0 - 16.0									
	4.0 x 25	16.0 - 21.0									
	4.0 x 30	21.0 - 26.0									
	4.0 x 35	26.0 - 30.5									
	4.0 x 40	30.5 - 35.0									

STANDARD RIVETS 标准型抽芯铆钉

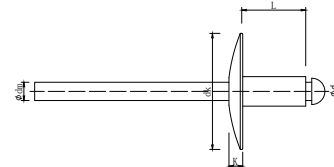
STAINLESS STEEL A2-STAINLESS STEEL A2 不锈钢 A2- 不锈钢 A2



Dome 圆头



CSK 120° 沉头

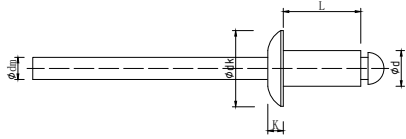


Large Flange 大法兰头

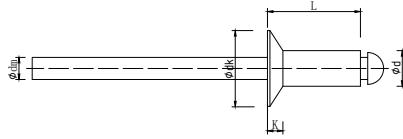
Rivet Ø 0.08/-0.15	dxL mm	Grip Range mm	dm max.	Dome		CSK 120°		Large Flange		Shear Strength N	Tensile Strength N
				dk max.	K max.	dk max.	K max.	dk max.	K max.		
4.8 Hole Size Ø 4.9-5.0 mm	4.8 x 6	1.0 - 2.5	3.2	10.1	2.0	9.5	2.0	16.5	2.5	4000	5000
	4.8 x 8	2.5 - 4.0									
	4.8 x 10	4.0 - 6.0									
	4.8 x 12	6.0 - 8.0									
	4.8 x 14	8.0 - 10.0									
	4.8 x 16	9.0 - 12.0									
	4.8 x 18	10.0 - 14.0									
	4.8 x 20	12.0 - 16.0									
	4.8 x 25	16.0 - 21.0									
	4.8 x 30	21.0 - 25.0									
	4.8 x 35	25.0 - 30.0									
4.8 x 40	30.0 - 35.0										
5.0 Hole Size Ø 5.1-5.2 mm	5.0 x 6	1.0 - 2.5	3.25	10.5	2.1	9.5	2.1	16.5	2.5	4700	5800
	5.0 x 8	2.5 - 4.0									
	5.0 x 10	4.0 - 6.0									
	5.0 x 12	6.0 - 8.0									
	5.0 x 14	8.0 - 10.0									
	5.0 x 16	9.0 - 12.0									
	5.0 x 18	10.0 - 14.0									
	5.0 x 20	12.0 - 16.0									
	5.0 x 25	16.0 - 21.0									
	5.0 x 30	21.0 - 25.0									
	5.0 x 35	25.0 - 30.0									
5.0 x 40	30.0 - 35.0										

STANDARD RIVETS 标准型抽芯铆钉

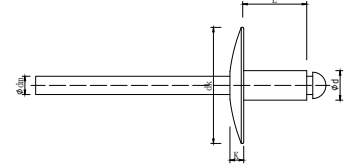
STAINLESS STEEL A2-STAINLESS STEEL A2 不锈钢 A2- 不锈钢 A2



Dome 圆头



CSK 120° 沉头



Large Flange 大法兰头

Rivet Ø 0.08/-0.15	dxL mm	Grip Range mm	dm max.	Dome		CSK 120°		Large Flange		Shear Strength N	Tensile Strength N
				dk max.	K max.	dk max.	K max.	dk max.	K max.		
6.0 Hole Size Ø 6.1-6.2 mm	6.0 x 8	1.5 - 3.0	3.7	12.6	2.5	11.3	2.1			5700	7500
	6.0 x 10	3.0 - 5.0									
	6.0 x 12	5.0 - 7.0									
	6.0 x 14	7.0 - 9.0									
	6.0 x 16	7.0 - 11.0									
	6.0 x 18	11.0 - 13.0									
	6.0 x 20	11.0 - 15.0									
	6.0 x 25	14.0 - 19.5									
	6.0 x 30	19.5 - 24.5									
	6.0 x 35	24.0 - 29.0									
	6.0 x 40	29.0 - 34.0									
6.4 Hole Size Ø 6.5-6.6 mm	6.4 x 8	1.5 - 3.0	3.9	13.4	2.7	12.5	2.7	19	3.2	7500	9300
	6.4 x 10	2.0 - 4.0									
	6.4 x 12	3.0 - 6.0									
	6.4 x 14	6.0 - 8.0									
	6.4 x 16	6.0 - 10.0									
	6.4 x 18	8.0 - 12.0									
	6.4 x 20	10.0 - 14.0									
	6.4 x 25	14.0 - 18.0									
	6.4 x 30	18.0 - 23.0									
	6.4 x 35	23.0 - 28.0									
	6.4 x 40	28.0 - 33.0									

SEALED RIVETS

封闭型抽芯铆钉



ALUMINUM-STEEL PHOSPHATED
铝制 - 碳钢 (磷化处理)



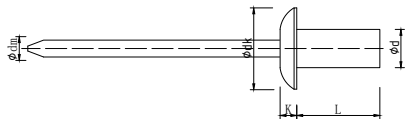
STEEL ZINC PLATED-STEEL ZINC PLATED
镀锌钢 - 镀锌钢



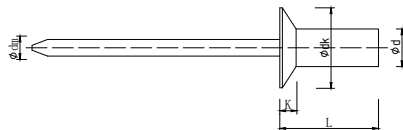
STAINLESS STEEL A2-STAINLESS STEEL A2
不锈钢 A2- 不锈钢 A2

SEALED RIVETS 封闭型抽芯铆钉

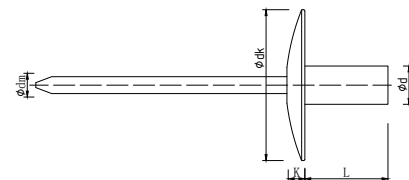
ALUMINUM-STEEL PHOSPHATED 铝制 - 碳钢 (磷化处理)



Dome 圆头



CSK 120° 沉头

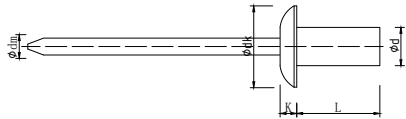


Large Flange 大法兰头

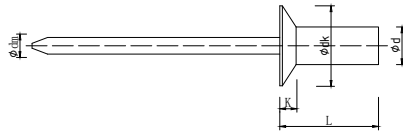
Rivet Ø 0.08/-0.15	dxL mm	Grip Range mm	dm max.	Dome		CSK 120°		Large Flange		Shear Strength N	Tensile Strength N
				dk max.	K max.	dk max.	K max.	dk max.	K max.		
3.2 Hole Size Ø 3.4-3.5 mm	3.2 x 6.5	0.5 - 2.0	2.0	6.7	1.3	6.7	1.3	9.8	2.0	1050	1250
	3.2 x 8	2.0 - 3.5									
	3.2 x 9.5	3.5 - 5.0									
	3.2 x 11	5.0 - 6.5									
	3.2 x 12.5	6.5 - 8.0									
4.0 Hole Size Ø 4.1-4.2 mm	4.0 x 8	0.5 - 3.5	2.5	8.4	1.7	8.4	1.7	12.5	2.2	1550	2150
	4.0 x 9.5	3.5 - 5.0									
	4.0 x 11	5.0 - 6.5									
	4.0 x 12.5	6.5 - 8.0									
	4.0 x 15	8.0 - 12.5									
4.8 Hole Size Ø 4.9-5.0 mm	4.8 x 8	1.0 - 3.0	3.0	10.1	2.0	10.1	2.0	16.5	2.5	2200	3050
	4.8 x 9.5	3.0 - 5.0									
	4.8 x 11	5.0 - 6.5									
	4.8 x 13	6.5 - 8.0									
	4.8 x 14.5	8.0 - 9.5									
	4.8 x 16	9.5 - 11.0									
	4.8 x 18	11.0 - 13.0									
	4.8 x 21	13.0 - 16.0									
	4.8 x 25	16.0 - 20.0									
6.4 Hole Size Ø 6.5-6.6 mm	6.4 x 12.5	1.5 - 6.0	3.9	13.4	2.7	13.4	2.7	16.5	3.2	4000	4900
	6.4 x 16	6.0 - 8.5									
	6.4 x 18	8.5 - 10.5									
	6.4 x 20	10.5 - 12.5									
	6.4 x 25	12.5 - 17.5									

SEALED RIVETS 封闭型抽芯铆钉

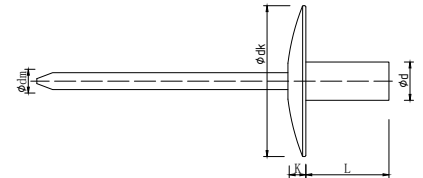
STEEL ZINC PLATED-STEEL ZINC PLATED 镀锌钢 - 镀锌钢



Dome 圆头



CSK 120° 沉头

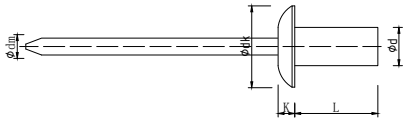


Large Flange 大法兰头

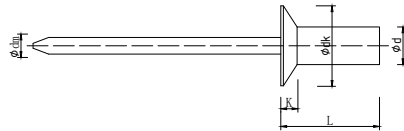
Rivet Ø 0.08/-0.15	dxL mm	Grip Range mm	dm max.	Dome		CSK 120°		Large Flange		Shear Strength N	Tensile Strength N
				dk max.	K max.	dk max.	K max.	dk max.	K max.		
3.2 Hole Size Ø 3.4-3.5 mm	3.2 x 6.5	0.5 - 2.0	2.0	6.7	1.3	6.7	1.3	9.8	2.0	1150	1300
	3.2 x 8	2.0 - 3.5									
	3.2 x 9.5	3.5 - 5.0									
	3.2 x 11	5.0 - 6.5									
	3.2 x 12.5	6.5 - 8.0									
4.0 Hole Size Ø 4.1-4.2 mm	4.0 x 8	0.5 - 3.5	2.5	8.4	1.7	8.4	1.7	12.5	2.2	1700	1550
	4.0 x 9.5	3.5 - 5.0									
	4.0 x 11	5.0 - 6.5									
	4.0 x 12.5	6.5 - 8.0									
	4.0 x 15	8.0 - 12.5									
4.8 Hole Size Ø 4.9-5.0 mm	4.8 x 8	1.0 - 3.0	3.0	10.1	2.0	10.1	2.0	16.5	2.5	2400	2800
	4.8 x 9.5	3.0 - 5.0									
	4.8 x 11	5.0 - 6.5									
	4.8 x 13	6.5 - 8.0									
	4.8 x 14.5	8.0 - 9.5									
	4.8 x 16	9.5 - 11.0									
	4.8 x 18	11.0 - 13.0									
	4.8 x 21	13.0 - 16.0									
	4.8 x 25	16.0 - 20.0									
6.4 Hole Size Ø 6.5-6.6 mm	6.4 x 12.5	1.5 - 6.0	3.9	13.4	2.7	13.4	2.7	16.5	3.2	3600	4000
	6.4 x 16	6.0 - 8.5									
	6.4 x 18	8.5 - 10.5									
	6.4 x 20	10.5 - 12.5									
	6.4 x 25	12.5 - 17.5									

SEALED RIVETS 封闭型抽芯铆钉

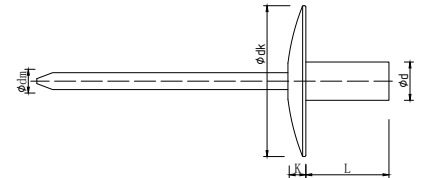
STAINLESS STEEL A2-STAINLESS STEEL A2 不锈钢 A2- 不锈钢 A2



Dome 圆头



CSK 120° 沉头



Large Flange 大法兰头

Rivet Ø 0.08/-0.15	dxL mm	Grip Range mm	dm max.	Dome		CSK 120°		Large Flange		Shear Strength N	Tensile Strength N
				dk max.	K max.	dk max.	K max.	dk max.	K max.		
3.2 Hole Size Ø 3.3-3.4 mm	3.2 x 6.0	0.5 - 1.5	2.05	6.7	1.3	6.7	1.3	9.8	2.0	2000	2200
	3.2 x 8	1.5 - 3.0									
	3.2 x 9.5	3.0 - 5.0									
	3.2 x 12	5.0 - 6.5									
	3.2 x 14	6.5 - 8.0									
4.0 Hole Size Ø 4.1-4.2 mm	4.0 x 6	0.5 - 1.5	2.5	8.4	1.7	8.4	1.7	12.5	2.2	3000	3500
	4.0 x 8	1.5 - 3.0									
	4.0 x 9.5	3.0 - 5.0									
	4.0 x 12	5.0 - 6.5									
	4.0 x 14	6.5 - 8.0									
	4.0 x 16	8.0 - 10.0									
4.8 Hole Size Ø 4.9-5.0 mm	4.8 x 8	0.5 - 3.0	3.05	10.1	2.0	10.1	2.0	16.5	2.5	4000	4400
	4.8 x 9.5	3.0 - 5.0									
	4.8 x 12	5.0 - 6.5									
	4.8 x 14	5.0 - 7.5									
	4.8 x 16	6.5 - 9.0									
	4.8 x 18	8.0 - 10.5									
	4.8 x 20	9.0 - 12.0									
6.4 Hole Size Ø 6.5-6.6 mm	6.4 x 12	1.5 - 6.5	3.95	13.4	2.7	13.4	2.7	16.5	3.2	6000	8000
	6.4 x 16	6.5 - 8.0									
	6.4 x 18	8.0 - 10.0									
	6.4 x 20	8.0 - 12.0									
	6.4 x 25	12.0 - 17.0									

PEEL RIVETS

拉花抽芯铆钉

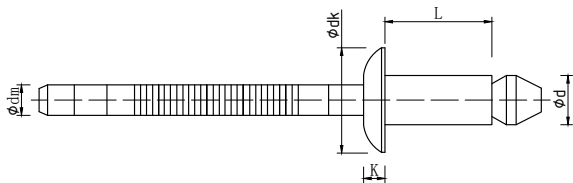


ALUMINUM-STEEL ZINC PLATED

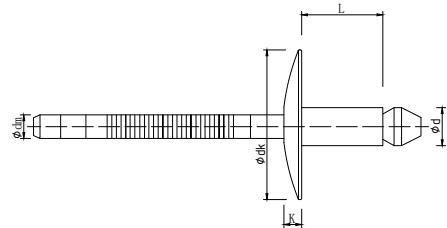
铝制 - 镀锌钢

PEEL RIVETS 拉花抽芯铆钉

ALUMINUM-STEEL ZINC PLATED 铝制 - 镀锌钢



Dome 圆头



Large Flange 大法兰头

Rivet Ø 0.08/-0.15	dxL mm	Grip Range mm	dm max.	Dome		Large Flang		Shear Strength N	Tensile Strength N
				dk max.	K max.	dk max.	K max.		
3.2 Hole Size Ø 3.4-3.5 mm	3.2 x 10	1.0 - 5.0	2.0	6.7	1.3	9.8	2.0	500	700
	3.2 x 12	3.0 - 7.0							
	3.2 x 14	5.0 - 9.0							
	3.2 x 16	7.0 - 11.0							
4.0 Hole Size Ø 4.2-4.4 mm	3.2 x 18	9.0 - 13.0	2.4	8.4	1.7	12.5	2.2	850	1000
	4.0 x 10	1.5 - 4.5							
	4.0 x 12	3.0 - 6.5							
	4.0 x 14	5.0 - 8.5							
	4.0 x 16	7.0 - 10.5							
	4.0 x 20	11.0 - 14.5							
4.8 Hole Size Ø 5.25-5.45 mm	4.8 x 10	1.5 - 4.5	2.9	10.1	2.0	16.5	2.5	1700	1700
	4.8 x 12	2.0 - 6.0							
	4.8 x 15	3.0 - 9.0							
	4.8 x 18	5.0 - 11.0							
	4.8 x 21	8.0 - 15.0							
	4.8 x 25	12.0 - 19.0							
	4.8 x 27	14.0 - 21.0							
	4.8 x 30	16.0 - 24.0							
	4.8 x 35	20.0 - 28.0							
6.4 Hole Size Ø 6.6-6.8 mm	6.4 x 12	1.5 - 4.5	4.1	13.4	2.7			3400	2900
	6.4 x 15	3.0 - 6.5							
	6.4 x 18	5.0 - 9.5							
	6.4 x 21	7.0 - 12.5							
	6.4 x 25	9.0 - 17.0							

TRI-FIRM RIVETS

灯笼抽芯铆钉

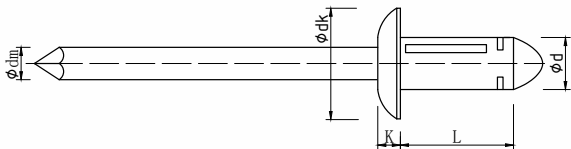


ALUMINUM-ALUMINUM

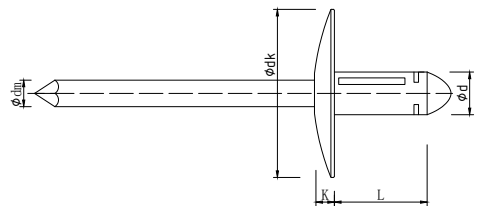
铝制 - 铝制

TRI-FIRM RIVETS 灯笼抽芯铆钉

ALUMINUM-ALUMINUM 铝制 - 铝制



Dome 圆头



Large Flange 大法兰头

Rivet Ø 0.08/-0.15	dxL mm	Grip Range mm	dm max.	Dome		Large Flang		Shear Strength N	Tensile Strength N
				dk max.	K max.	dk max.	K max.		
4.0 Hole Size Ø 4.2-4.5 mm	4.0 x 14	1.0 - 3.0	2.5	8.4	1.7	12.5	2.0	600	700
	4.0 x 16	1.0 - 5.0							
	4.0 x 18.8	1.5 - 7.5							
	4.0 x 20.8	1.5 - 9.5							
	4.0 x 25	2.0 - 13.0							
4.8 Hole Size Ø 5.1-5.3 mm	4.8 x 16	1.0 - 4.0	3.0	10.1	2.0	16.5	2.5	800	1100
	4.8 x 18	1.0 - 6.0							
	4.8 x 20.5	1.0 - 8.5							
	4.8 x 25	1.5 - 12.5							
5.0 Hole Size Ø 5.3-5.5 mm	5.0 x 16	1.0 - 4.0	3.0	11	2.3			1000	1300
	5.0 x 18	1.0 - 6.0							
	5.0 x 20.5	1.0 - 8.5							
	5.0 x 25	1.5 - 12.5							

UNI-GRIP RIVETS

单鼓抽芯铆钉



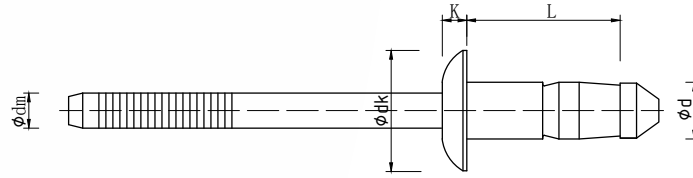
STEEL ZINC PLATED-STEEL ZINC PLATED
镀锌钢 - 镀锌钢



STAINLESS STEEL A2-STAINLESS STEEL A2
不锈钢 A2- 不锈钢 A2

UNI-GRIP RIVETS 单鼓抽芯铆钉

STEEL ZINC PLATED-STEEL ZINC PLATED 镀锌钢 - 镀锌钢

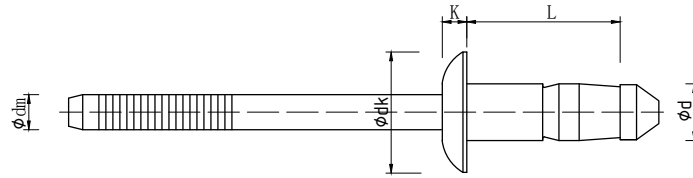


Dome 圆头

Rivet Ø mm	dxL mm	Grip Range mm	dm max.	Dome		Shear Strength N	Tensile Strength N
				dk max.	K max.		
3.2 Hole Size Ø 3.3-3.4 mm	3.2 x 6.5	1.0 - 3.0	2.0	6.8	1.4	1200	1300
	3.2 x 9.2	3.0 - 5.0				1700	1300
	3.2 x 11.5	5.0 - 7.0				2500	1300
4.0 Hole Size Ø 4.1-4.3 mm	4.0 x 7.5	1.0 - 3.0	2.6	8.0	1.4	2000	2800
	4.0 x 10	3.0 - 5.0				3500	2800
	4.0 x 12.5	5.0 - 7.0				4100	2800
4.8 Hole Size Ø 4.9-5.1 mm	4.8 x 10	1.5 - 3.5	3.2	9.6	1.5	3600	3800
	4.8 x 12	3.5 - 6.0				4200	3800
	4.8 x 14	6.0 - 8.5				5000	3800
	4.8 x 16.5	7.5 - 10.0				5000	3800
6.0 Hole Size Ø 6.1-6.3 mm	6.0 x 11	1.5 - 4.0	4.0	12.3	2.1	4200	5400
	6.0 x 13	3.0 - 6.0				5400	5400
	6.0 x 16	6.0 - 9.0				8500	5400
	6.0 x 19	9.0 - 12.0				8500	5400
6.4 Hole Size Ø 6.5-6.7 mm	6.4 x 12.5	1.5 - 4.5	4.2	13.4	2.7	10000	5800
	6.4 x 14.5	3.0 - 6.5				11000	5800
	6.4 x 16.5	5.0 - 8.5				11000	5800
	6.4 x 19.5	8.0 - 11.5				11000	5800

UNI-GRIP RIVETS 单鼓抽芯铆钉

STAINLESS STEEL A2-STAINLESS STEEL A2 不锈钢 A2- 不锈钢 A2

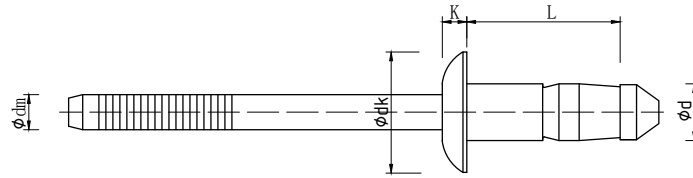


Dome 圆头

Rivet Ø mm	dxL mm	Grip Range mm	dm max.	Dome		Shear Strength N	Tensile Strength N
				dk max.	K max.		
3.2 Hole Size Ø 3.3-3.4mm	3.2 x 6.5	1.0 - 3.0	2.1	6.6	1.1	1600	2000
	3.2 x 9.5	3.0 - 5.0				1700	2000
	3.2 x 11.5	5.0 - 7.0				3200	2000
4.0 Hole Size Ø 4.1-4.3 mm	4.0 x 7.5	1.0 - 3.0	2.6	8.0	1.5	2800	4000
	4.0 x 10	3.0 - 5.0				5200	4000
	4.0 x 12.5	5.0 - 7.0				5200	4000
4.8 Hole Size Ø 4.9-5.1 mm	4.8 x 10	1.5 - 3.5	3.2	9.6	1.5	4200	5000
	4.8 x 12.5	3.5 - 6.0				5500	5000
	4.8 x 14.5	6.0 - 8.5				5500	5000
	4.8 x 16.5	7.5 - 10.0				5500	5000

UNI-GRIP RIVETS 单鼓抽芯铆钉

STAINLESS STEEL A2-STAINLESS STEEL A2 不锈钢 A2- 不锈钢 A2



Dome 圆头

Rivet Ø mm	dxL mm	Grip Range mm	dm max.	Dome		Shear Strength N	Tensile Strength N
				dk max.	K max.		
6.0 Hole Size Ø 6.1-6.3 mm	6.0 x 11	1.5 - 4.0	4.2	12.6	2.2	7800	6200
	6.0 x 13	3.0 - 6.0				9500	6200
	6.0 x 16	6.0 - 9.0				9500	6200
	6.0 x 19	9.0 - 12.0				9500	6200
6.4 Hole Size Ø 6.5-6.7 mm	6.4 x 12.5	1.5 - 4.5	4.8	13.4	2.7	10500	8300
	6.4 x 14.5	3.0 - 6.5				13700	8300
	6.4 x 16.5	5.0 - 8.5				13700	8300
	6.4 x 19.5	8.0 - 11.5				13700	8300

MULTI-GRIP RIVETS

多鼓抽芯铆钉



ALUMINUM-STEEL ZINC PLATED
铝制 - 镀锌钢



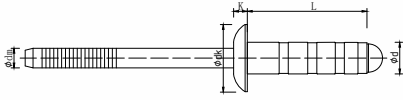
STEEL ZINC PLATED-STEEL ZINC PLATED
镀锌钢 - 镀锌钢



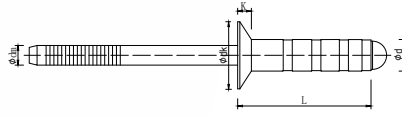
STAINLESS STEEL A2-STAINLESS STEEL A2
不锈钢 A2 - 不锈钢 A2

MULTI-GRIP RIVETS 多鼓抽芯铆钉

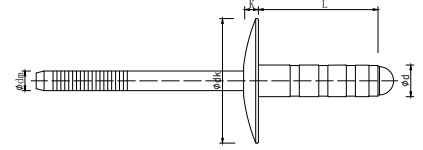
ALUMINUM-STEEL ZINC PLATED 铝制 - 镀锌钢



Dome 圆头



CSK 120° 沉头

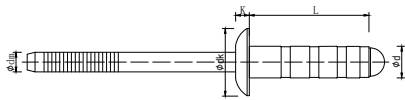


Large Flange 大法兰头

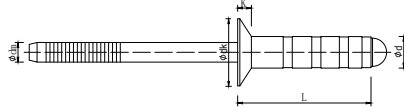
Rivet Ø mm	dxL mm	Grip Range mm	dm max.	Dome		CSK 120°		Large Flange		Shear Strength N	Tensile Strength N
				dk max.	K max.	dk max.	K max.	dk max.	K max.		
3.2 Hole Size Ø 3.3-3.4 mm	3.2 x 6.0	1.0 - 3.5	2.0	6.7	1.3	6.3	1.3	9.8	2.0	650	850
	3.2 x 8.0	1.5 - 5.0									
	3.2 x 10	2.5 - 7.0									
	3.2 x 12	4.5 - 9.0									
	3.2 x 14	6.5 - 10.5									
	3.2 x 16	9.0 - 12.5									
4.0 Hole Size Ø 4.1-4.2 mm	4.0 x 6.0	1.0 - 3.0	2.5	8.4	1.7	7.5	1.7	12.5	2.2	950	1500
	4.0 x 8.0	1.5 - 5.0									
	4.0 x 10	2.0 - 6.5									
	4.0 x 12	3.5 - 8.5									
	4.0 x 14	5.5 - 10.5									
	4.0 x 16	6.0 - 12.5									
	4.0 x 18	9.5 - 14.5									
4.0 x 20	11.5 - 16.5										
4.8 Hole Size Ø 4.9-5.0 mm	4.8 x 10	1.5 - 6.0	3.0	10.1	2.0	9.5	2.0	16.5	2.5	1320	2000
	4.8 x 12	2.0 - 8.0									
	4.8 x 14	3.5 - 9.5									
	4.8 x 16	6.0 - 11.5									
	4.8 x 18	8.0 - 13.5									
	4.8 x 20	10.0 - 15.5									
	4.8 x 22	12.0 - 17.5									
	4.8 x 24	12.0 - 19.0									
	4.8 x 27	17.0 - 22.0									
	4.8 x 30	20.0 - 25.0									
6.4 Hole Size Ø 6.5-6.6 mm	6.4 x 12.5	1.0 - 6.0	4.2	13.4	2.7	12.5	2.7	19	3.2	3800	4000
	6.4 x 14.5	1.5 - 7.5									
	6.4 x 16.5	2.0 - 9.0									
	6.4 x 18.5	4.0 - 11.0									
	6.4 x 20.5	5.5 - 12.5									
	6.4 x 25.5	10.5 - 17.5									

MULTI-GRIP RIVETS 多鼓抽芯铆钉

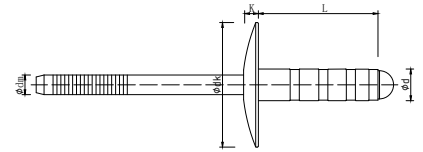
STEEL ZINC PLATED-STEEL ZINC PLATED 镀锌钢 - 镀锌钢



Dome 圆头



CSK 120° 沉头

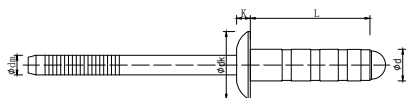


Large Flange 大法兰头

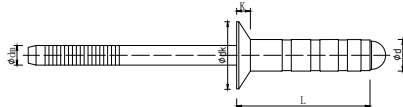
Rivet Ø mm	dxL mm	Grip Range mm	dm max.	Dome		CSK 120°		Large Flange		Shear Strength N	Tensile Strength N
				dk max.	K max.	dk max.	K max.	dk max.	K max.		
3.2 Hole Size Ø 3.3-3.4 mm	3.2 x 8.0	1.0 - 4.0	2.25	6.7	1.3	6.2	1.3	9.8	2.0	1000	1200
	3.2 x 10	2.5 - 6.0									
	3.2 x 12	1.5 - 8.0									
	3.2 x 14	3.5 - 9.5									
	3.2 x 16	5.5 - 11.5									
4.0 Hole Size Ø 4.1-4.2 mm	4.0 x 8.0	1.0 - 3.5	2.85	8.4	1.7	7.5	1.7	12.5	2.2	1500	2000
	4.0 x 10	1.5 - 5.0									
	4.0 x 12	3.5 - 7.0									
	4.0 x 14	1.5 - 9.0									
	4.0 x 16	3.5 - 11.0									
	4.0 x 18	5.5 - 12.5									
4.8 Hole Size Ø 4.9-5.0 mm	4.8 x 10	1.5 - 4.5	3.35	10.1	2.0	9.5	2.0	16.5	2.5	2400	2900
	4.8 x 12	2.0 - 6.5									
	4.8 x 14	3.0 - 8.5									
	4.8 x 16	3.0 - 10.5									
	4.8 x 18	5.0 - 12.5									
	4.8 x 20	7.0 - 14.5									
	4.8 x 22	9.0 - 16.5									
	4.8 x 25	11.0 - 19.0									
	4.8 x 27	13.0 - 21.0									
4.8 x 30	16.0 - 24.0										
6.4 Hole Size Ø 6.5-6.6 mm	6.4 x 12.5	1.0 - 6.0	4.15	13.4	2.7	12.5	2.7	19	3.2	3800	4000
	6.4 x 14.5	1.5 - 7.5									
	6.4 x 16.5	2.0 - 9.0									
	6.4 x 18.5	4.0 - 11.0									
	6.4 x 20.5	5.5 - 12.5									
	6.4 x 25.5	10.5 - 17.5									

MULTI-GRIP RIVETS 多鼓抽芯铆钉

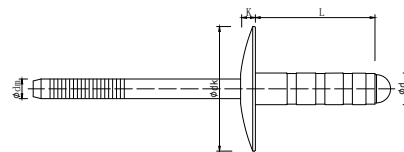
STAINLESS STEEL A2-STAINLESS STEEL A2 不锈钢 A2- 不锈钢 A2



Dome 圆头



CSK 120° 沉头



Large Flange 大法兰头

Rivet Ø mm	dxL mm	Grip Range mm	dm max.	Dome		CSK 120°		Large Flange		Shear Strength N	Tensile Strength N
				dk max.	K max.	dk max.	K max.	dk max.	K max.		
3.2 Hole Size Ø 3.3-3.4 mm	3.2 x 8.0	1.0 - 4.0	2.25	6.7	1.3	6.2	1.3	9.8	2.0	1700	2000
	3.2 x 10	2.5 - 6.0									
	3.2 x 12	1.5 - 8.0									
	3.2 x 14	3.5 - 9.5									
	3.2 x 16	5.5 - 11.5									
4.0 Hole Size Ø 4.1-4.2 mm	4.0 x 8.0	1.0 - 3.5	2.85	8.4	1.7	7.5	1.7	12.5	2.2	2700	3400
	4.0 x 10	1.5 - 5.0									
	4.0 x 12	3.5 - 7.0									
	4.0 x 14	1.5 - 9.0									
	4.0 x 16	3.5 - 11.0									
	4.0 x 18	5.5 - 12.5									
	4.0 x 20	7.5 - 14.5									
4.8 Hole Size Ø 4.9-5.0 mm	4.8 x 10	1.5 - 4.5	3.35	10.1	2.0	9.5	2.0	16.5	2.5	4000	4500
	4.8 x 12	2.0 - 6.5									
	4.8 x 14	3.0 - 8.5									
	4.8 x 16	3.0 - 10.5									
	4.8 x 18	5.0 - 12.5									
	4.8 x 20	7.0 - 14.5									
	4.8 x 22	9.0 - 16.5									
	4.8 x 25	11.0 - 19.0									
	4.8 x 27	13.0 - 21.0									
	4.8 x 30	16.0 - 24.0									
6.4 Hole Size Ø 6.5-6.6 mm	6.4 x 12.5	1.0 - 6.0	4.15	13.4	2.7	12.5	2.7	19	3.2	6000	7500
	6.4 x 14.5	1.5 - 7.5									
	6.4 x 16.5	2.0 - 9.0									
	6.4 x 18.5	4.0 - 11.0									
	6.4 x 20.5	5.5 - 12.5									
	6.4 x 25.5	10.5 - 17.5									

HEMLOK RIVETS

海马抽芯铆钉



STEEL ZINC PLATED-STEEL ZINC PLATED

镀锌钢 - 镀锌钢

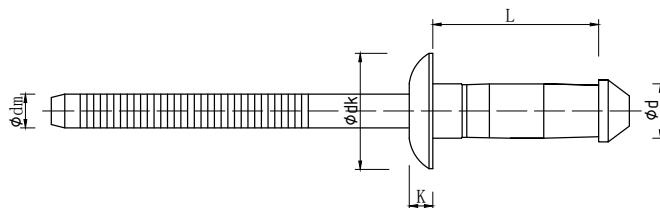


STAINLESS STEEL A2-STAINLESS STEEL A2

不锈钢 A2- 不锈钢 A2

HEMLOK RIVETS 海马抽芯铆钉

STEEL ZINC PLATED-STEEL ZINC PLATED 镀锌钢 - 镀锌钢

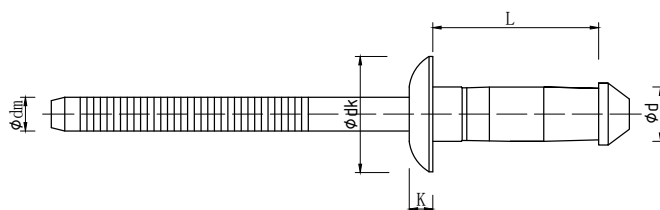


Dome 圆头

Rivet Ø mm	dxL mm	Grip Range mm	dm max.	Dome		Shear Strength N	Tensile Strength N
				dk max.	K max.		
6.4 Hole Size Ø 6.7-6.9 mm	6.4 x 9.0	1.5 - 3.5	4.2	13.4	3.5	6800	6400
	6.4 x 10.5	2.8 - 4.8	4.2	13.4	3.5	9200	6400
	6.4 x 12.5	4.8 - 6.8	4.2	13.4	3.5	10000	6400
	6.4 x 14.5	6.8 - 8.8	4.2	13.4	3.5	10000	6400
	6.4 x 16.5	8.8 - 10.8	4.2	13.4	3.5	11000	6400
	6.4 x 18.5	10.8 - 12.8	4.2	13.4	3.5	11000	6400
	6.4 x 20.5	12.8 - 14.8	4.2	13.4	3.5	11000	6400
	6.4 x 22.5	14.8 - 16.8	4.2	13.4	3.5	11000	6400
	6.4 x 24.5	16.8 - 18.8	4.2	13.4	3.5	11000	6400
	6.4 x 26.5	18.8 - 20.8	4.2	13.4	3.5	11000	6400
	6.4 x 28.5	20.8 - 22.8	4.2	13.4	3.5	11000	6400
6.4 x 30.5	22.8 - 24.8	4.2	13.4	3.5	11000	6400	
6.4 x 32.5	24.8 - 26.8	4.2	13.4	3.5	11000	6400	

HEMLOK RIVETS 海马抽芯铆钉

STAINLESS STEEL A2-STAINLESS STEEL A2 不锈钢 A2- 不锈钢 A2



Dome 圆头

Rivet Ø 6.4	dxL mm	Grip Range mm	dm max.	Dome		Shear Strength N	Tensile Strength N
				dk max.	K max.		
Hole Size Ø 6.6 - 6.7 mm	6.4 x 10.5	2.0 - 4.5	4.2	13.4	3.5	14000	8300
	6.4 x 12.5	4.0 - 6.5	4.2	13.4	3.5	14500	8300
	6.4 x 14.5	6.0 - 8.5	4.2	13.4	3.5	14500	8300
Hole Size Ø 6.5 - 6.6 mm	6.4 x 16.5	8.0 - 10.5	4.2	13.4	3.5	14500	8300
	6.4 x 18.5	10.0 - 12.5	4.2	13.4	3.5	14500	8300
	6.4 x 20.5	12.0 - 14.5	4.2	13.4	3.5	14500	8300
	6.4 x 22.5	13.0 - 16.0	4.2	13.4	3.5	14500	8300
	6.4 x 24.5	15.0 - 18.0	4.2	13.4	3.5	14500	8300
6.4 x 26.5	17.0 - 20.0	4.2	13.4	3.5	14500	8300	

MONOBOLT RIVETS

外锁抽芯铆钉



STEEL ZINC PLATED-STEEL ZINC PLATED

镀锌钢 - 镀锌钢

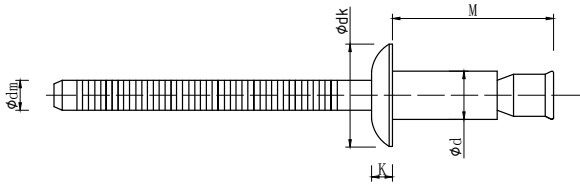


STAINLESS STEEL A2-STAINLESS STEEL A2

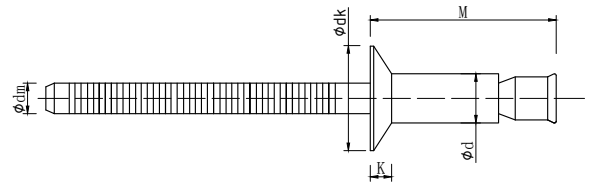
不锈钢 A2- 不锈钢 A2

MONOBOLT RIVETS 外锁抽芯铆钉

STEEL ZINC PLATED-STEEL ZINC PLATED 镀锌钢 - 镀锌钢



Dome 圆头



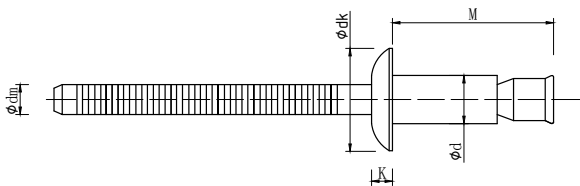
CSK 120° 沉头

Rivet Ø mm	dxM mm	Grip Range mm	dm max.	Dome		Shear Strength N	Tensile Strength N
				dk max.	K max.		
4.8 Hole Size Ø 4.9-5.1 mm	4.8 x 18.2	1.6 - 6.9	3.1	10.1	2.1	5800	4100
	4.8 x 24.5	1.6 - 11.0					
6.4 Hole Size Ø 6.7-7.0 mm	6.4 x 23.7	2.1 - 9.5	4.1	13.4	2.9	10500	8200
	6.4 x 33	2.1 - 15.8					

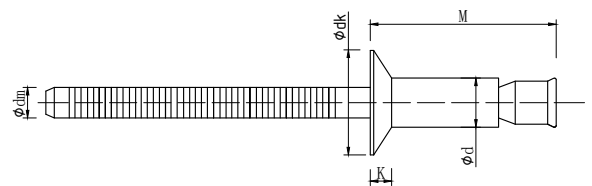
Rivet Ø mm	dxM mm	Grip Range mm	dm max.	CSK 120°		Shear Strength N	Tensile Strength N
				dk max.	K max.		
4.8 Hole Size Ø 4.9-5.1 mm	4.8 x 20	3.2 - 8.3	3.1	8.5	2.2	5800	4100
	4.8 x 26.5	3.2 - 12.2					
6.4 Hole Size Ø 6.7-7.0 mm	6.4 x 26.3	3.2 - 12.1	4.1	10.1	2.4	10500	8200
	6.4 x 34.5	3.2 - 16.0					

MONOBOLT RIVETS 外锁抽芯铆钉

STAINLESS STEEL A2-STAINLESS STEEL A2 不锈钢 A2- 不锈钢 A2



Dome 圆头



CSK 120° 沉头

Rivet Ø mm	dxM mm	Grip Range mm	dm max.	Dome		Shear Strength N	Tensile Strength N
				dk max.	K max.		
4.8 Hole Size Ø 4.9-5.1 mm	4.8 x 18.2	1.6 - 6.9	3.1	10.1	2.2	6400	5000
	4.8 x 24.5	1.6 - 11.0					
6.4 Hole Size Ø 6.7-7.0 mm	6.4 x 26.7	2.1 - 9.5	4.1	13.4	3.0	11000	9000
	6.4 x 36.5	2.1 - 15.8					

Rivet Ø mm	dxM mm	Grip Range mm	dm max.	CSK 120°		Shear Strength N	Tensile Strength N
				dk max.	K max.		
4.8 Hole Size Ø 4.9-5.1 mm	4.8 x 20	3.2 - 8.4	3.1	9.0	2.2	6400	5000
	4.8 x 26.5	3.2 - 12.2					
6.4 Hole Size Ø 6.7-7.0 mm	6.4 x 28.3	3.2 - 12.1	4.1	10.5	2.4	11000	9000
	6.4 x 36.3	3.2 - 16.0					

INTERLOCK RIVETS

内锁抽芯铆钉



STEEL ZINC PLATED-STEEL ZINC PLATED

镀锌钢 - 镀锌钢

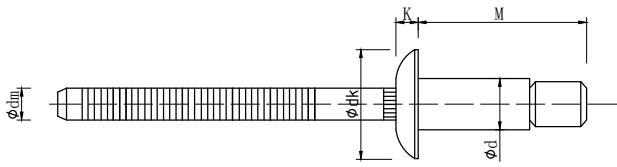


STAINLESS STEEL A2-STAINLESS STEEL A2

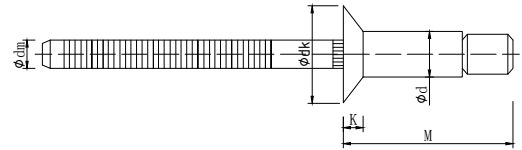
不锈钢 A2- 不锈钢 A2

INTERLOCK RIVETS 内锁抽芯铆钉

STEEL ZINC PLATED-STEEL ZINC PLATED 镀锌钢 - 镀锌钢



Dome 圆头



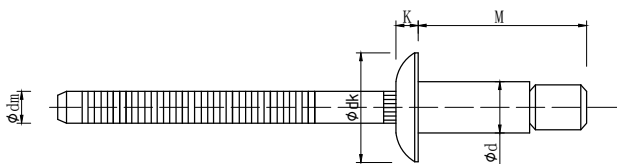
CSK 120° 沉头

Rivet Ø mm	dxM mm	Grip Range mm	dm max.	Dome		Shear Strength N	Tensile Strength N
				dk max.	K max.		
4.8 Hole Size Ø 4.9-5.1 mm	4.8 x 18.2	1.6 - 6.9	3.1	10.2	2.5	5600	4400
	4.8 x 24.6	5.4 - 11.0					
6.4 Hole Size Ø 6.7-6.9 mm	6.4 x 25.3	2.1 - 9.5	4.1	13.5	3.1	10500	8200
	6.4 x 35.6	2.1 - 15.8					

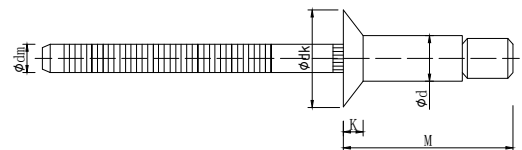
Rivet Ø mm	dxM mm	Grip Range mm	dm max.	CSK 120°		Shear Strength N	Tensile Strength N
				dk max.	K max.		
4.8 Hole Size Ø 4.9-5.1 mm	4.8 x 20.2	3.2 - 8.4	3.1	9.2	2.1	5400	4000
	4.8 x 26.5	7.7 - 12.7					
6.4 Hole Size Ø 6.7-6.9 mm	6.4 x 28.3	4.3 - 12.1	4.1	11.4	2.3	10500	8200
	6.4 x 36.5	10.5 - 18.4					

INTERLOCK RIVETS 内锁抽芯铆钉

STAINLESS STEEL A2-STAINLESS STEEL A2 不锈钢 A2- 不锈钢 A2



Dome 圆头



CSK 120° 沉头

Rivet Ø mm	dxM mm	Grip Range mm	dm max.	Dome		Shear Strength N	Tensile Strength N
				dk max.	K max.		
4.8 Hole Size Ø 4.9-5.1 mm	4.8 x 20.2	3.2 - 8.4	3.1	9.2	2.2	6000	4500
	4.8 x 26.5	7.7 - 12.7					
6.4 Hole Size Ø 6.7-6.9 mm	6.4 x 28.3	4.3 - 12.1	4.1	11.4	2.4	10500	8200
	6.4 x 37.5	10.5 - 18.4					

Rivet Ø mm	dxM mm	Grip Range mm	dm max.	CSK 120°		Shear Strength N	Tensile Strength N
				dk max.	K max.		
4.8 Hole Size Ø 4.9-5.1 mm	4.8 x 20.2	3.2 - 8.4	3.1	9.2	2.2	6000	4500
	4.8 x 26.5	7.7 - 12.7					
6.4 Hole Size Ø 6.7-6.9 mm	6.4 x 28.3	4.3 - 12.1	4.1	11.4	2.4	10500	8200
	6.4 x 37.5	10.5 - 18.4					

销售网络 / 合作伙伴 SALES NETWORK/COOPERATIVE PARTNER



➤ 丰富项目实施经验和研发成果，全面帮助用户提高产品品质、降低生产成本，保障产品质量。协助您保持竞争优势和领先地位。

➤ Enrich project implementation experience and R&D achievements, comprehensively help users improve product quality, reduce production costs, and ensure product quality. Help you maintain competitive advantage and leading position.

➤ 公司着眼于行业的中高端市场定位，并已是诸多国际、国内知名品牌企业的合格供应商。

我们致力于科技创新，依据客户及相关行业的不同要求，不断提供持续研究与生产的技术支持，争取成为客户的战略合作伙伴。

➤ The company focuses on the mid-to-high-end market positioning of the industry, and has become a qualified supplier of many international and domestic well-known brand enterprises.

We are committed to scientific and technological innovation. According to the different requirements of customers and related industries, we continue to provide sustainable technical support for research and production, and strive to become customers' strategic partners.

Foshan City Guangqingchang Metal Plastic Co.,Ltd.

📍 A1-3 Jinsha Chengxi Industrial Zone, Danzao Town
Nanhai District, 528223 Foshan, Guangdong ,China

☎ +86 (757) 8661 0511

☎ +86 (757) 8661 6278

✉ sales@qingchang.com.cn

✉ jiaqi.guo@qingchang.com.cn

佛山市广庆昌金属塑料有限公司

📍 中国广东省佛山市南海区丹灶镇金沙城区城西工业区 A1 区 3 号

☎ 0757-8661 0511

☎ 0757-8661 6278

✉ guangqingchang@139.com

www.qingchangrivet.com